



# How to Recycle in North Arlington

The following items are required by law to be recycled by all households:

newspapers, cardboard, magazines, commingled glass, aluminum, tin and recyclable plastics; refrigerators, freezers and air conditioners; grass and leaves.

## Main Phone Number

201-991-6060

To reach a department by extension dial main number then extension.

- Mayor's Office . . . . . Ext. 108
- Administrator/Clerk . . . Ext. 107
- Tax Office . . . . . Ext. 115
- Municipal Court . . . . . Ext. 113
- Police Dept. . . . . Ext. 177
- Police Records . . . . . Ext. 137
- Construction Dept. . . . Ext. 111
- Library . . . . . Ext. 128
- Health Dept. . . . . Ext. 121
- Tax Assessor . . . . . Ext. 119
- Property Main. . . . . Ext. 154

Dept. of Public Works  
201-955-5665

**Peter C. Massa**  
Mayor

## Council:

- Joseph P. Bianchi
- Al Granell
- Richard T. Hughes
- Dan Pronti
- Mark Yampaglia
- Tom Zammatore

## Commingled recyclables.



Mix aluminum and tin cans, glass bottles and jars and plastic containers in a reusable container and place it at curbside for collection.

Cans and bottles must be rinsed clean with caps removed. No paper or plastic bags.

Acceptable plastics include soda bottles, milk and water jugs, household detergent containers and items labeled for recycling. All plastics 1-7.

## E-Waste (Electronic Equipment Only)

Residents only collection Dumpster at DPW. Hours Monday-Friday 8am to 3:30pm. Elderly and Handicapped can call Public Works Garage at 201-955-5665, ext. 14 to schedule a pickup.

## Appliances.

Appliances containing Freon gas must be recycled. Included are refrigerators, freezers and air conditioners (please remove any doors). Also appliances such as stoves, hot water heaters, washers and dryers. All must be scheduled for Friday pickup. Please call 201-955-5665 x14 to schedule a pickup.



## Exclusions.

Light bulbs and tubes, china/dishware items and household pots and pans are NOT recyclable.

Please dispose of these items in your regular household garbage.

## Newspapers/Cardboard/Magazines.

Recycle clean newsprint, magazines and catalogues. Newspapers should be tied in one-foot bundles. Please do not use plastic bags. Residential cardboard can be placed on the curb on your scheduled newspaper pickup day. Cardboard must be clean and consolidated



## Phone books.

Telephone directories can be placed at curbside on regular newspaper pickup days.



## Grass and leaves.

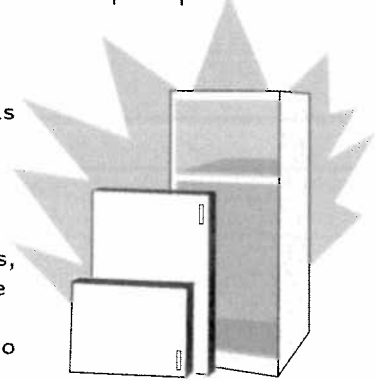
Grass clippings should be put out in containers or in biodegradable paper bags weighing no more than 40 pounds. Do not fill garbage containers more than half way.

Biodegradable paper bags are also preferred for disposal of leaves. Leaves, whether piled at the curb or bagged, are removed on posted street sweeping days.

Please note: plastic bags are not acceptable for grass and leaves.

Residents are encouraged to use mulching mowers that leave grass clippings on lawns to naturally fertilize the soil. Due to new federal storm water regulations, the owner or occupant of any property, or any employee or contractor of such owner or occupant engaged to provide lawn care or landscaping services, shall not place leaves closer than ten (10) feet from any storm drain inlet. Any person in violation thereof, shall be subject to a penalty.

**Landscapers are responsible for the removal of grass clippings and leaves. After December 5th homeowners and landscapers are no longer permitted to put leaf piles out at the curb. They must be bagged or removed by the homeowner or landscaping service.**



## Rechargeable batteries.



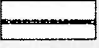
The Public Works Facility located at 50 Disposal Road will only accept rechargeable batteries like ones used in cellphones, computers, power tools, etc. Mon-Fri 8a.m. to 4p.m. Alkaline batteries can be disposed with regular garbage.

# Recycling Schedule

Please note: Commingled recyclables include glass, plastic, aluminum and tin.

\*Holiday – No Collection

To determine your collection zone, please refer to the map on the back cover.

**Apartments**  of 10 units or more.

Recyclables — bundled newspapers and commingled glass, aluminum and tin — collected **EVERY MONDAY** (except holidays) at the designated pickup area within the apartment complex.

## Private Residences TUESDAY – FRIDAY

Check dates for your zone below; to determine your collection zone, please refer to map on back cover.

### ZONE 1 Tuesday Collection

(Belleville Turnpike to Beaver Avenue and Carrie Road; Ridge Road to eastern Boundary)

	Newspapers/ Cardboard	Commingled	Newspapers/ Cardboard	Commingled	Newspapers/ Cardboard	Commingled
January	27		6	13	20	
February	24		3	10	17	
March	24	31	3	10	17	
April			7	14	21	28
May			5	12	19	26
June	30		2	9	16	23
July	28		7	14	21	
August	25		4	11	18	
September		1	8	15	22	29
October			6	13	20	27
November			3	10	17	24
December	29		1	8	15	22

### ZONE 2 Wednesday Collection

(South side of Belmont Avenue to Belleville Turnpike; River Road and Ridge Road)

	Newspapers/ Cardboard	Commingled	Newspapers/ Cardboard	Commingled	Newspapers/ Cardboard	Commingled
January	28		7	14	21	
February	25		4	11	18	
March	25		4	11	18	
April		1	8	15	22	29
May			6	13	20	27
June			3	10	17	24
July	29		1	8	15	22
August	26		5	12	19	
September	23	30		2	9	16
October			7	14	21	28
November			4	11	18	25
December	30		2	9	16	23

### ZONE 3 Thursday Collection

(North side of Belmont Avenue to Veterans Place – Boston Avenue – Ridge Park Drive; River Road to Ridge Road)

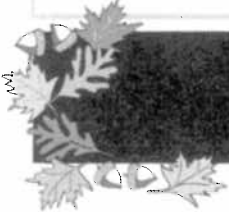
	Newspapers/ Cardboard	Commingled	Newspapers/ Cardboard	Commingled	Newspapers/ Cardboard	Commingled
January	29		1*	8	15	22
February	26			5	12	19
March	26			5	12	19
April		2	9	16	23	30
May	21	28			7	14
June			4	11	18	25
July	30		2	9	16	23
August	27			6	13	20
September	24			3	10	17
October	22	29		1	8	15
November			5	12	19	26*
December	31		3	10	17	24

### ZONE 4 Friday Collection

(Bergen Avenue, Astor and Noel Drive to Jauncey Avenue; Union Avenue/River Road to eastern Boundary)

	Newspapers/ Cardboard	Commingled	Newspapers/ Cardboard	Commingled	Newspapers/ Cardboard	Commingled
January	30		2	9	16	23
February	27			6	13	20
March	27			6	13	20
April	24			3	10	17
May	22	29		1	8	15
June			5	12	19	26
July	31		3	10	17	24
August	28			9	14	21
September	25			4	11	18
October	23	30		2	9	16
November			6	13	20	27
December			4	11	18	25*

Leaves should be put out 24 hours prior to your sweeper schedule.



## Acceptable Materials for BCUA Collections

For complete listing go to [www.bcu.org](http://www.bcu.org)

Materials should be in original containers and labeled.

- Aerosol Cans
- Anti-Freeze
- Batteries - vehicle & rechargeable only
- Blacktop Sealers
- Bug Sprays
- Disinfectants
- Drain Cleaners
- Fertilizer
- Fire Extinguishers
- Fluorescent Light Bulbs
- Gasoline
- Glues
- Herbicides
- Insecticides
- Kerosene
- Lighter Fluid
- Mercury Switches
- Oil Filters (Used)
- Paints & Varnishes-All Types
- Pesticides
- Photographic Chemicals
- Propane Gas Cylinders (1 lb. and 20 lb. only)
- Solvents & Thinners
- Thermostats/Thermometers
- Used Motor Oils

## Unacceptable Materials for HHW Collections

- Alkaline Batteries (AA, AAA, C, D, 9V) throw in normal garbage
- Unlabeled wastes or containers with unknown contents
- Regulated medical wastes, radioactive materials, and explosives
- Containers larger than five (5) gallons
- Compressed cylinders (oxygen or acetylene)
- Pressure-treated lumber or railroad ties
- Computers, electronics and tires are NOT accepted at HHW collections.

Need help in the disposal of unacceptable waste? Call 201-807-5825 or log onto [www.bcu.org](http://www.bcu.org)

### Directions to Collection Sites

#### Directions to BERGEN COMMUNITY COLLEGE: 4/6/2014, 6/22/2014 and 10/19/2014

##### **From the North (Via Route 17)**

Turn right off Route 17 South onto Ridgewood Avenue (West) to Paramus Road. Turn left onto Paramus Road and continue approximately two miles to college, proceed around jug handle to main entrance.

##### **From the East**

Take Route 4 West to Paramus Road (Paramus Road is ¼ mile past Route 17 intersection.) Turn right onto Paramus Road and proceed North approximately two miles to Bergen Community College entrance on right.

##### **From the South (Via Route 17)**

Take Route 17 North to Century Road exit, second exit to the right, proceed around cloverleaf over Route 17 onto Century Road (West). Continue to Paramus Road and turn right onto Paramus Road to College entrance on right.

##### **From the West**

Take Route 4 East to Paramus Road (exit under overpass). Turn right onto Paramus Road and proceed north for approximately two miles to college entrance on right.

---

#### Directions to BERGEN COUNTY UTILITIES AUTHORITY: 3/8/2014 and 7/19/2014

##### **Traveling Route 17 North**

Exit at Moonachie/Wood-Ridge exit. Make right at light onto Moonachie Ave. Pass Teterboro Airport (on your left) and continue going straight until road ends into BCUA facilities.

##### **Traveling Route 17 South**

Exit at Moonachie/Wood-Ridge exit (exit is by The Fiesta). Make left at light onto Moonachie Avenue. Pass Teterboro Airport (on your left) and continue going straight until road ends into BCUA facilities.

---

#### Directions to BERGEN COUNTY CAMPGAW MOUNTAIN RESERVATION: 5/17/2014, 9/6/2014 & 11/1/2014

##### **Traveling Route 17 North**

Take into Mahwah. Take Route 202 (Morristown/Suffern) exit. Make left at stop sign. Pass Ramapo College on left. Make left onto Darlington Avenue; bear right at fork onto Campgaw. The Reservation is on the right.

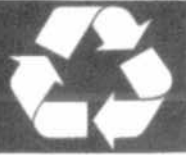
##### **Traveling Route 208 West**

Take into Oakland. Take Rt. 202/Ramapo Valley Road North. Right onto Darlington, bear right at fork onto Campgaw. The Reservation is on the right.



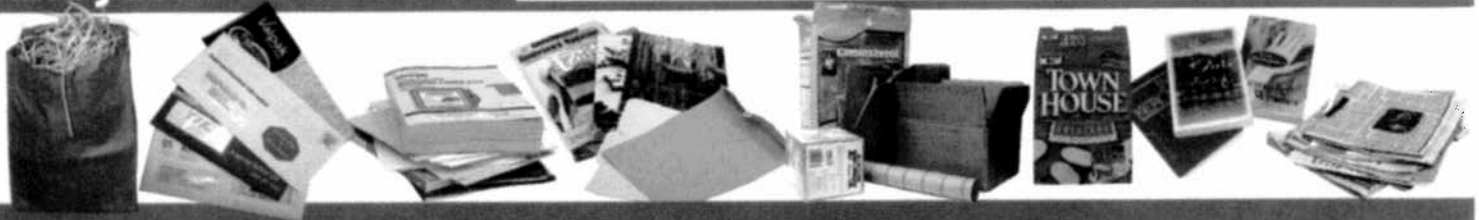


# Recycle These Items



## PAPER, CARDBOARD and JUNK MAIL TOO!

Includes: Newspaper, phone books, **junk mail**, magazines, catalogs, paperback books, brown grocery bags, gray paperboard (such as: cereal boxes & tissue boxes), **shredded paper**, school and office paper.



## ALUMINUM, STEEL & TIN CANS; GLASS BOTTLES & JARS



**Empty**  
non-hazardous  
aerosols

## PLASTIC BOTTLES & JARS

Only plastic bottles and jars with a number or on the bottom



# DO NOT RECYCLE



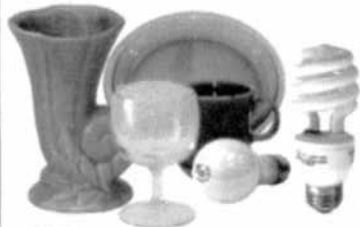
**NO** hardback books, foil-coated or food contaminated boxes.



**NO** plastic pails, trays, tubs, food containers or foil items



**NO** motor oil, lubricants, paint and pesticide containers



**NO** mugs, glasses, vases, bulbs, bakeware, dishes, & window glass



**NO** refrigerated or frozen containers



**NO** plastic bags, styrofoam, lids or caps

# General information about recycling in North Arlington:



## ■ No pickup on holidays.

There are no garbage and recycling pickups on designated holidays.

If your usual collection falls on a holiday please hold your refuse for the next regularly scheduled pickup. When your recycling day falls on a holiday, hold the scheduled material for two weeks. Do not dispose of both newspaper and commingled on the same day.

If you have any questions about holiday pickup please call the DPW at 201-955-5665 x14. The following are 2014 holidays.

### **HOLIDAY – NO GARBAGE OR RECYCLING PICKUP**

Memorial Day.....	Monday, May 26, 2014
4th of July .....	Friday, July 4, 2014
Labor Day .....	Monday, September 1, 2014
Thanksgiving Day .....	Thursday, November 27, 2014
Christmas Day .....	Thursday, December 25, 2014
New Year's Day .....	Thursday, January 1, 2015

## ■ You must recycle. IT'S THE LAW.

Recycling is mandated by state law and local ordinance. Recycling helps to protect the environment. Disposal of mandatory recyclables with regular household garbage will subject residents to a fine of up to \$50 per occurrence.

If you have questions about garbage or recycling disposal in North Arlington please call Mark Cunningham Department of Public Works, at 201-955-5665 x14.

## ■ Household hazardous waste.

Residents may no longer dispose of hazardous waste at the public works facility, such as paint thinners, solvents or pesticides. Please see the acceptable materials list in the BCUA Collections section in this newsletter, or call the Bergen County Hazardous Waste Hotline at 201-807-5825, or [www.bcua.org](http://www.bcua.org).

## ■ Important information for those living and working along Ridge Road

If your business, home, or apartment is located along Ridge Road, garbage will be picked up daily, with the exception of the "Holiday No Pickup" dates listed in this schedule.

All garbage containers should be placed at the curbside for pickup **NO EARLIER** than 9:00 a.m. each morning. All garbage must be placed in plastic trash bags, and then placed inside a metal, or heavy plastic can or barrel.  
**AT NO TIME SHALL ANY BUSINESS OR RESIDENT PLACE GARBAGE OUT ON RIDGE ROAD BEFORE 9:00 AM THE MORNING OF THE PICKUP.**

# Keep North Arlington Clean

Residents are asked to review their habits regarding garbage disposal. Careless and sloppy garbage disposal practices are the primary cause of litter. To do your part to help keep North Arlington clean, please observe the following rules:



**1** Place household garbage in tied, heavy-duty garbage bags or in containers of no more than 40 pounds with lids securely in place. Garbage should be placed at curbside no earlier than 6:00 p.m. of the evening before pickup day.

**2** Homeowners & Contractors are responsible for removal of all construction materials. If you have any questions regarding bulky trash call 201-955-5665 x14.

**3** No recyclables.

**4** No dead animals. For removal of dead animals call the Police Department at 201-991-4400.

**5** No automotive or mechanical parts.

**6** No chemical waste.

**7** No waste from manufacturing process.

**8** No tree stumps, earth or stones.

In addition to regular household garbage, residents may dispose of the following items on regularly scheduled garbage pickup days: furniture, rugs and mattresses. Rugs must be bundled and tied – cut in lengths no greater than four feet. As for white good pickups residents must call 201-955-5665 x14 to schedule a Friday pickup.



# Recycling Collection Zones

Please refer to Recycling Schedule inside for more detailed information.



**APARTMENTS**  
Monday  
Collection

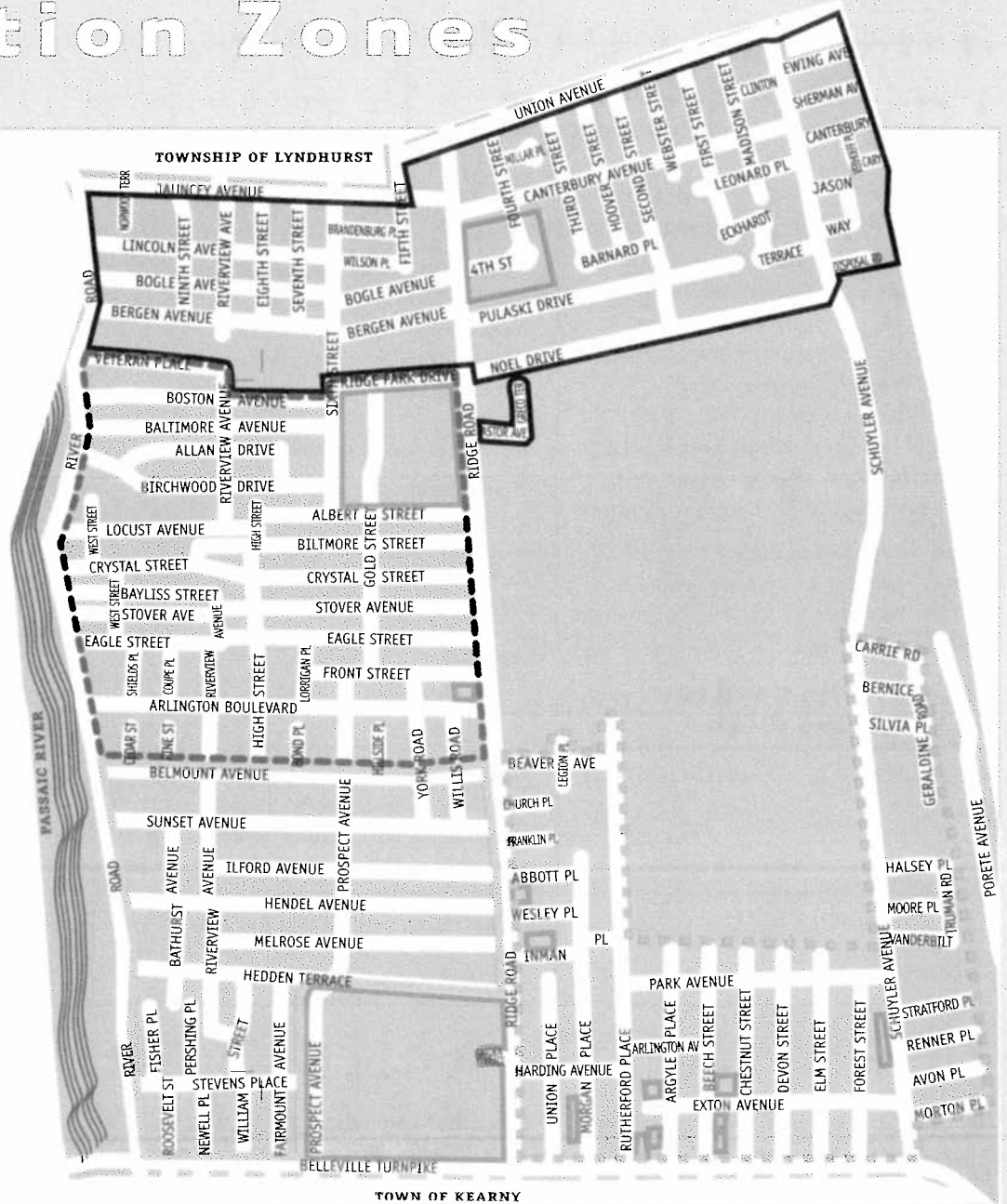
**ZONE 1**  
Tuesday  
Collection

**ZONE 2**  
Wednesday  
Collection

**ZONE 3**  
Thursday  
Collection

**ZONE 4**  
Friday  
Collection

Printed on recycled paper.



Borough of North Arlington  
214 Ridge Road  
North Arlington, NJ 07031

PRSRT STD  
US Postage Paid  
Permit No. 7179  
Kearny, NJ

POSTAL CUSTOMER LOCAL  
North Arlington, NJ 07031

2014 Recycling Guide  
Please visit our website @ [northarlington.org](http://northarlington.org)